

STAINLESS STEEL FREE-STAND, TYPE 4X

INDUSTRY STANDARDS

 UL 508A Listed; Type 3R, 4, 4X, 12; File No. E61997
 cUL Listed per CSA C22.2 No 94; Type 3R, 4, 4X, 12; File No. E61997

 NEMA Type 3, 3R, 4, 4X, 12, 13
 CSA File No. 42186: Type 4, 4X, 12
 E.I.A. RS-310-D
 IEC 60529, IP66
Meets NEMA Type 3RX requirements
APPLICATION

This single-door enclosure provides industry-leading protection for systems incorporating large components or complex mounting configurations in highly corrosive environments. The addition of 19-in. rack-mounting accessories makes these enclosures ideal for providing rugged protection for sensitive rack-mounted components in harsh industrial environments. The enclosure is typically used in food processing plants, pharmaceutical manufacturing facilities, petrochemical plants and wastewater treatment facilities.

SPECIFICATIONS

- 12 gauge Type 304 or 316L stainless steel
- Seams continuously welded and ground smooth; no holes or knockouts
- Mounting channels welded horizontally to interior body sides at top, bottom and center
- Panels and rack mounting angles can be mounted anywhere along channels
- Rolled lip around three sides of door and along top of enclosure opening excludes liquids and contaminants
- Stainless steel door clamps on three sides of door assure water-tight seal
- Heavy-gauge stainless steel continuous hinge
- Stainless steel hinge pin
- Stainless steel hasp and staple provided for padlocking
- Data pocket is high-impact thermoplastic
- Heavy-duty lifting eyes are Type 316L stainless steel
- Oil-resistant door gasket
- Bonding provision on door; grounding stud on body
- Accessory mounting channel provided in enclosure top

FINISH

Enclosures are unpainted. Front, sides, top and back have smooth #4 brushed finish. Optional steel panels, swing-out panels, side-mounted panels, rack-mounting frames, heavy-duty panel supports and center panel supports are painted white. Optional full, half and side-mounted conductive panels are available.

ACCESSORIES

Caster Kit
 Clamping Nut Package
 Drip Shield Kit for Type 12 Enclosures
 PanelLite Enclosure Lights

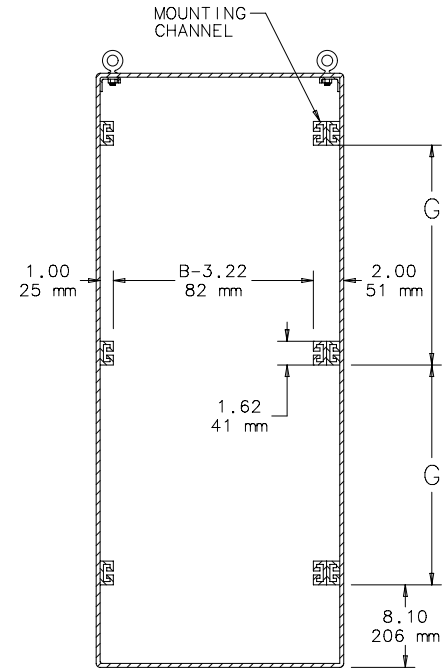
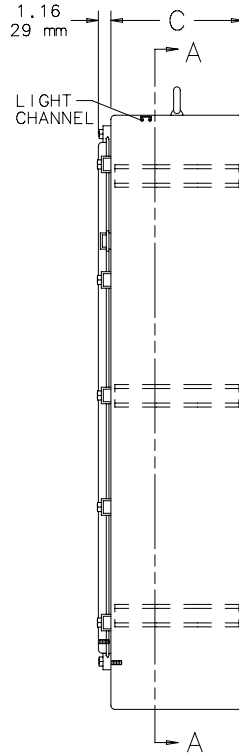
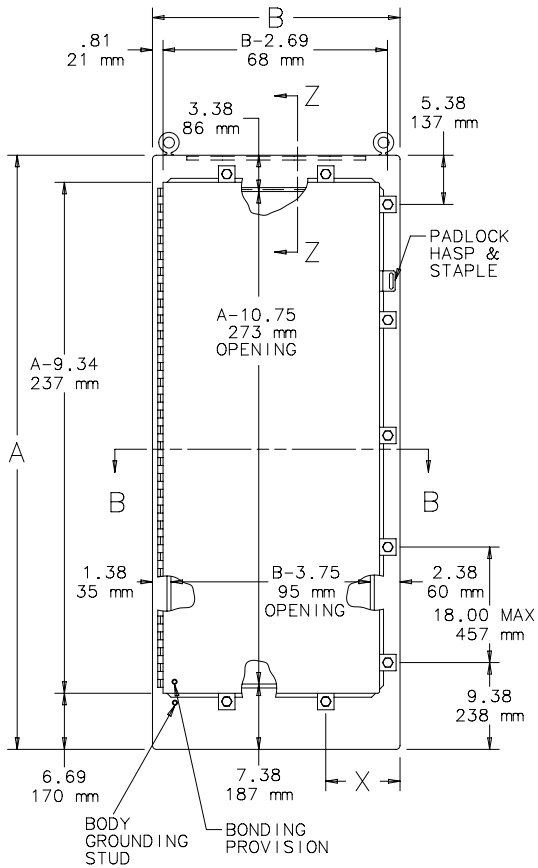
MODIFICATION AND CUSTOMIZATION

Hoffman excels at modifying and customizing products to your specifications. Contact your local Hoffman sales office or distributor for complete information.

BULLETIN: A4SL
Standard Products

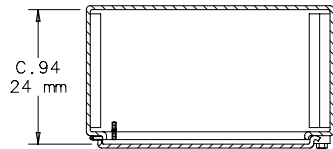
Catalog Number	AxBxC in./mm	Stainless Steel Type	X in./mm	G in./mm
A72H2518SSFS	72.06 x 25.06 x 18.06 1830 x 637 x 459	304	6.38 162	29.12 740
A72H2518SS6FS	72.06 x 25.06 x 18.06 1830 x 637 x 459	316L	6.38 162	29.12 740
A72H3124SSFS	72.06 x 31.06 x 24.06 1830 x 789 x 611	304	8.38 213	29.12 740
A72H3124SS6FS	72.06 x 31.06 x 24.06 1830 x 789 x 611	316L	8.38 213	29.12 740
A72H3724SSFS	72.06 x 37.06 x 24.06 1830 x 941 x 611	304	10.38 264	29.12 740
A72H3724SS6FS	72.06 x 37.06 x 24.06 1830 x 941 x 611	316L	10.38 264	29.12 740

Purchase panels and accessories separately.

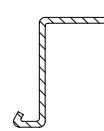


SECTION A-A

- NOTE:
1. Maximum spacing between clamps is 18.00 (457mm). See General Accessories chapter for section views A-A and B-B showing accessories.
 2. Removable data pocket is 12.00 x 12.00 (305mm x 305mm).



SECTION B-B



C2568-C

SECTION Z-Z